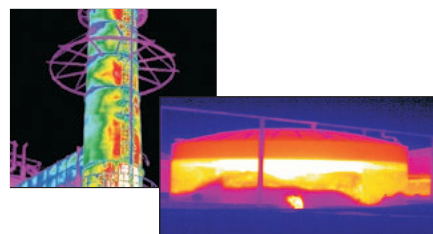
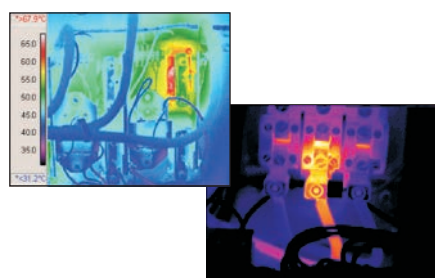


- Thermal imaging or thermography is a non-invasive technique primarily concerned with heat transfer of infrared heat radiation. Used extensively to identify the condition of building envelopes, various machine types and electrical systems (high resistance hot-spot at central phase & failing SCR pictured) to reveal a range of potential problems that are un-deetectable to the human eye.
- With thermal imaging we can also verify level to tank level indicators, identify and quantify tank volume loss and flow restriction due to scale and settled deposits (pictured), locate degraded refractory lining (pictured) and all achievable without the risks associated with opening and gaining restricted access.
- Our engineering dept retro fit IP65 rated inspection windows for safer every day visual and thermal infrared surveys into electrical panels without the need to open and expose work crew to live electrics and arc flash explosions.



With good connections to Amsterdam via Norwich, our experienced ASNT & PCN qualified personnel can be routed anywhere in the world at short notice.

Our expanding offshore portfolio & business return is a testament to our ability to save our clients many tens of thousands pounds with each survey. When unseen problems arise 'think thermally' think Geo Therm Ltd - looking for faults on a different wavelength!

Your Next Thermal Imaging Survey Date Due:



Geo Therm Ltd
 Riverside Business Park,
 Riverside Road, Lowestoft,
 Suffolk. NR33 0TQ,
 United Kingdom
 T: 44(0)1502 515707
 F: 44(0)1502 530275
 E: info@geothermltd.co.uk
 URL: www.geothermltd.co.uk



**Detecting Heat
 Preventing Downtime**



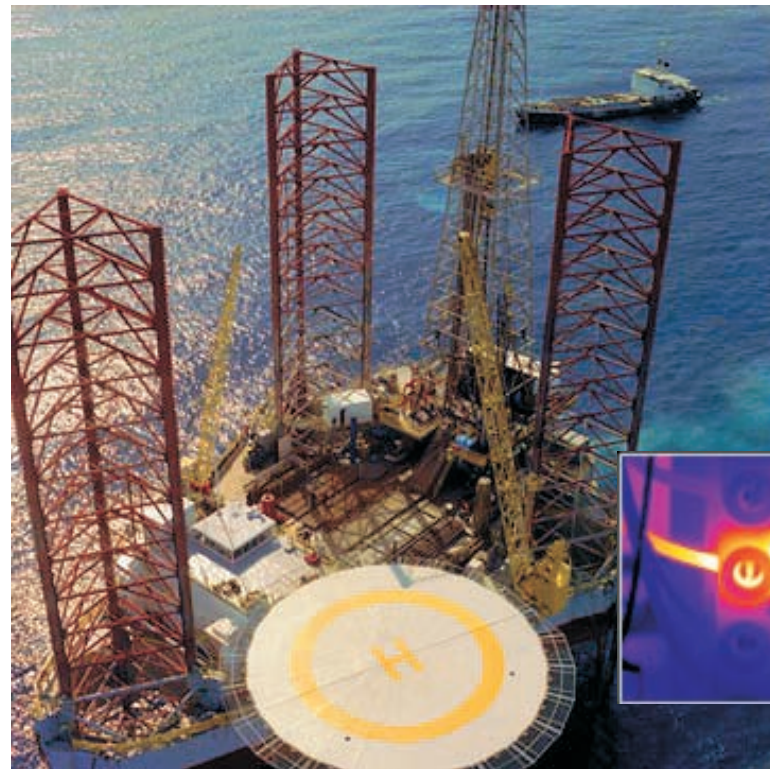
**Detecting Heat
 Preventing Downtime**



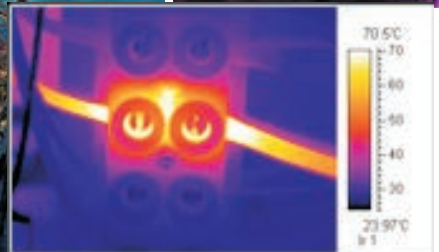
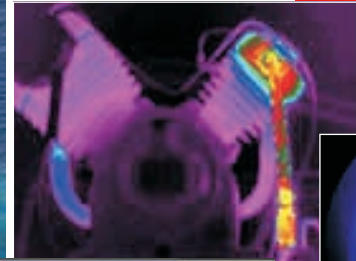
**LEADING THERMAL IMAGING
 SURVEY CONTRACTOR**

Quality Without Compromise

- **Thermal Imaging, a non-invasive technique which detects failing & defective equipment by its heat signature, without affecting production or rig operations.**
- **Improve your productivity, risk management & safety protocols. Insurance compliant.**
- **Clear & concise exception based reports are handed to your engineer upon survey completion.**



Overheating cylinder head due to blocked oil feed line



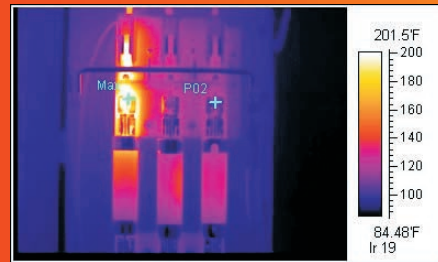
High resistance 'hot spot' due to loose connection



Incipient motor winding damage



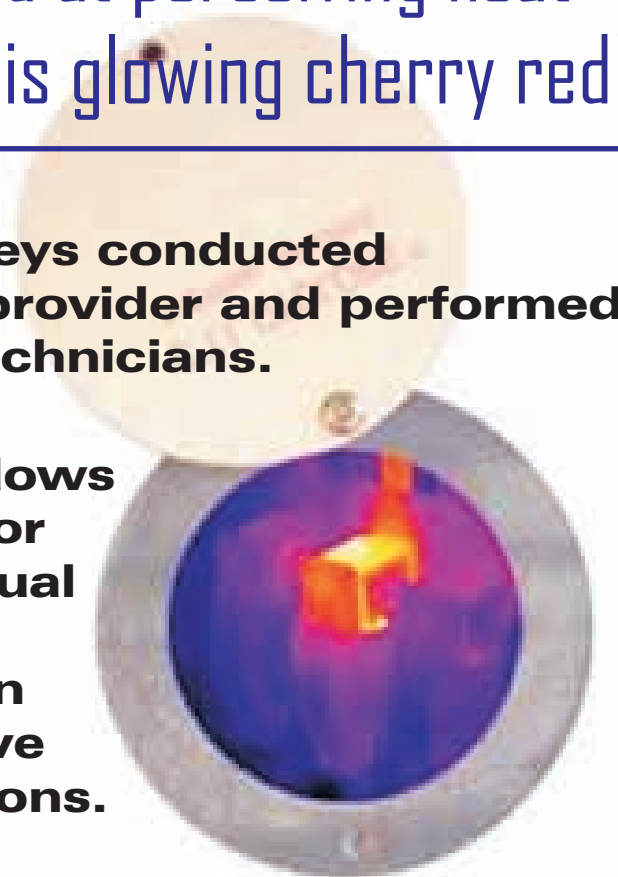
Abnormal heating to left phase fuse connect



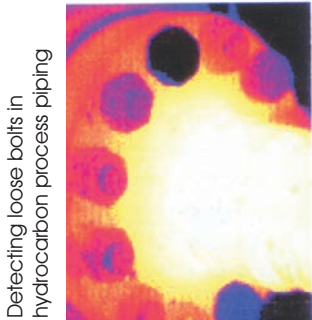
- **Detect incipient electro/mechanical problems, lagging deterioration, corrosion, hydrate formation, locate tank sediment & liquid levels, loose flange & busbar bolts, failing SCR's, monitor bulkhead temps during flaring & much more.**

The human eye is ill-adapted at perceiving heat unless a failing component is glowing cherry red!

- **Professional, unbiased surveys conducted by an independent service provider and performed by qualified ASNT & PCN technicians.**
- **We retro fit inspection windows into electrical panel doors for safer everyday visual & annual thermal imaging surveys, eliminating the need to open and expose work crew to live electrics & arc flash explosions.**



Electrical fault as seen by a thermal camera through inspection window



Detecting loose bolts in hydrocarbon process piping



GeoTherm Ltd-thermal imaging services
Detecting faults on a different wavelength.

THERMAL IMAGING SURVEYS - DETECTING HEAT PREVENTING DOWNTIME

T: +44(0)1502 515707 F: +44(0)1502 530275 E: info@geothermltd.co.uk